



Comprehensive and Powerful Choledochos Fiber Endoscope



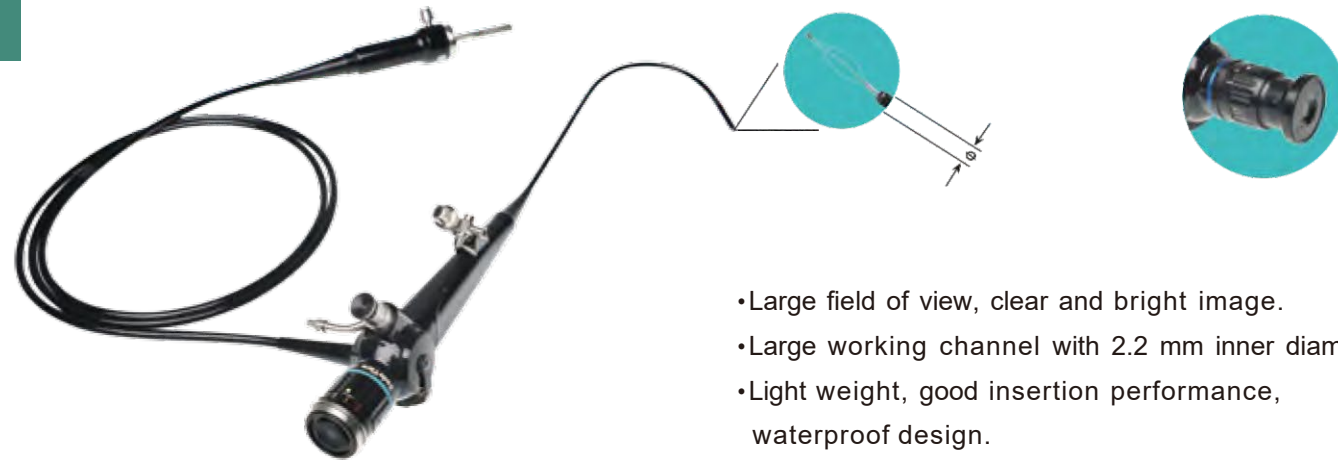
ES-EFC66
Fiber Choledochoscope



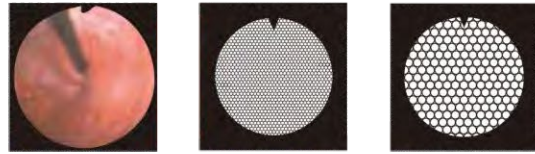
ESSE3 srl, Via Garibaldi 30
14022 Castelnuovo D.B. (AT)
Tel +39 011 99 27 706
Fax +39 011 99 27 506
e-mail: danielec@esse3-medical.com
web: www.esse3.dreamgest.com



Fiber Choledochoscope



- Large field of view, clear and bright image.
- Large working channel with 2.2 mm inner diameter.
- Light weight, good insertion performance, waterproof design.
- Dual working channels scope HT66 makes irrigation, biopsy and other therapeutic performance excellent.
- 40 x eyepiece, imported high-definition light guide and image guide.
- Suitable for all kinds of video system with flexible or rigid scope lens adapters.



Item/Model	ES-EFC66 routine diagnostic	ES-EFD66 dual channel
Field of View	110° Forward viewing	110° Forward viewing
Depth of View Field	3mm~50mm Fixed Focus	3mm~50mm Fixed Focus
Range of Tip Bending	Up 160° , Down 130°	Up 160° , Down 130°
Outer Diameter of Distal End	ø 4.9mm	ø 5.9mm
Outer Diameter of Insertion Tube	ø 5mm	ø 6.0mm
Inner Diameter of Instrument Channel	ø 2.2mm	ø 2.6mm
Inner Diameter of Suction	——	ø 1.2mm
Working Length	380mm	380mm
Waterproof	•	•

Standard Configurations:

- Fiber Choledochoscope main unit*1;
- Ventilation cover*1;
- Water three channels*1;
- Hand-pressed endoscopic leak detector*1;
- Biopsy forceps*1;
- Stone basket*1;
- Attract button*1;
- Pipe cleaning brush*1;
- Product Quality Assurance*1;
- Technical Instructions*1;
- Len Mirror box*1;
- User Manual*1;
- Carton*1



*Specification design and accessories are subject to change without any notice on obligation on the part of manufacturer.



Comprehensive and Powerful Fiber Bronchoscope

ES-FEBP68

Fiber Bronchoscope



ESSE3 srl, Via Garibaldi 30
14022 Castelnuovo D.B. (AT)
Tel +39 011 99 27 706
Fax +39 011 99 27 506
e-mail: danielec@esse3-medical.com
web: www.esse3.dreamgest.com



Portable Fiber Bronchoscope



- Equipped with excellent optical components, new generation portable fiber bronchoscope offers bright and clear im source is energy-saving and can work 2 hours continuously with normal #7 battery. This product is portable and easy to use, supports biopsy sampling, cytological examination, sputum suction, intubation and other diagnostic or therapeutic operation. The portability makes it the best choice for emergency intubation or sputum suction on bedside.

- 40 x eyepiece, imported high-definition light guide and image guide.

- Working together with metal arc xenon lamp light source, video system and endoscopy workstation, the image can be archived for reference and contrast in the future.



Item/Model	ES-FEBP68 routine	ES-FEBP66 pediatric	ES-FEBP66P large channel	ES-EBB66P intubation type
Field of View	110° Forward viewing	intubation 100° Forward	100° Forward	100° Forward
Depth of View Field	3mm-50mm Fixed Focus	3mm-50mm Fixed Focus	3mm-50mm Fixed Focus Up	3mm-50mm Fixed Focus Up
Range of Tip Bending	Up 180°, Down 130°	Up 180°, Down 130°	Up180°, Dowl 130°	Up180°, Dowl 130°
Outer Diameter of Distal End	ø 4.9mm	ø 3.5mm	ø 5.9mm	ø 4.9mm
Outer Diameter of Insertion	ø 5mm	ø 3.6mm	ø 6mm	ø 5mm
Inner Diameter of Instrument	ø 2.2mm	ø 1.2mm	ø 2.8mm	ø 2.2mm
Working Length	550mm/600mr	550mm/600mr	550mm/600mr	550mm/600mr
Waterproof	•	•	•	•

Standard Configurations:

- Portable Fiber Bronchoscope main unit*1;
- Light cable*1;
- Portable Mini light source*1;
- Plug valve caps*1;
- Ventilation cover*5;
- Hand-pressed endoscopic leak detector*1;
- Attract button*1;
- Biopsy forceps*1;
- Pipe cleaning brush*1;
- Biopsy cleaning brush*1;
- 7# battery*3;
- Product Quality Assurance*1;
- Technical Instructions*1;
- User Manual*1;
- Carton box*2



*Specification design and accessories are subject to change without any notice on obligation on the part of manufacturer.



Comprehensive and Powerful Fiber Rhino-Laryngoscope



ES-ET600

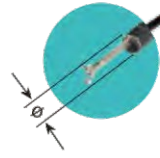
Fiber Rhino-Laryngoscope



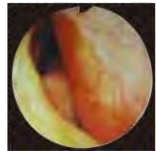
ESSE3 srl, Via Garibaldi 30
14022 Castelnovo D.B. (AT)
Tel +39 011 99 27 706
Fax +39 011 99 27 506
e-mail: danielec@esse3-medical.com
web: www.esse3.dreamgest.com



Fiber Rhino-Laryngoscope



- Bright image facilitates the diagnosis.
- Large working channel with 2.2 mm inner diameter.
- Light weight, high insertion performance, waterproof design.
- Combined with the VScope endoscopy workstation and video system, a set of very advanced digital endoscope image observation, processing, recording system can be easily formed. Optical image can be conveniently transformed to video image, not only greatly facilitating operation, but also providing unprecedented convenience for teaching and training application.
- 40 x eyepiece, imported high-definition light guide and image guide.
- Suitable for all kinds of video system with flexible or rigid scope lens adapters.



Item/Model	ES-ET600 Routine diagnostic	ES-EP6600 Slim type
Field of View	85° Forward viewing	85° Forward viewing
Depth of View Field	3mm-50mm Fixed Focus	3mm-50mm Fixed Focus
Range of Tip Bending	Up 130°, Down 130°	Up 130°, Down 130°
Outer Diameter of Distal Enc	ø 4.9mm	ø 3.5mm
Outer Diameter of Insertior Tube	ø 5mm	ø 3.6mm
Inner Diameter of Instrument Channel	ø 2.2mm	ø 1.2mm
Working Length	365mm	300mm
Waterproof	•	•

Standard Configurations:

- Fiber Rhino laryngoscope*1
- Plug valve cap*5
- Vent cover*1
- Hand pressure endoscope leak detector*1
- Biopsy Forceps*2
- Attract button*1
- Pipe cleaning brush*1
- Biopsy mouth brush*1
- Mouth pad*2
- Product Quality Assurance*1
- Technical Instruction*1
- Mirror box*1
- Carton*1
- Carton lining*1



*Specification design and accessories are subject to change without any notice on obligation on the part of manufacturer.



Comprehensive and Powerful Video GASTRO & COLON VIDEOSCOPIES

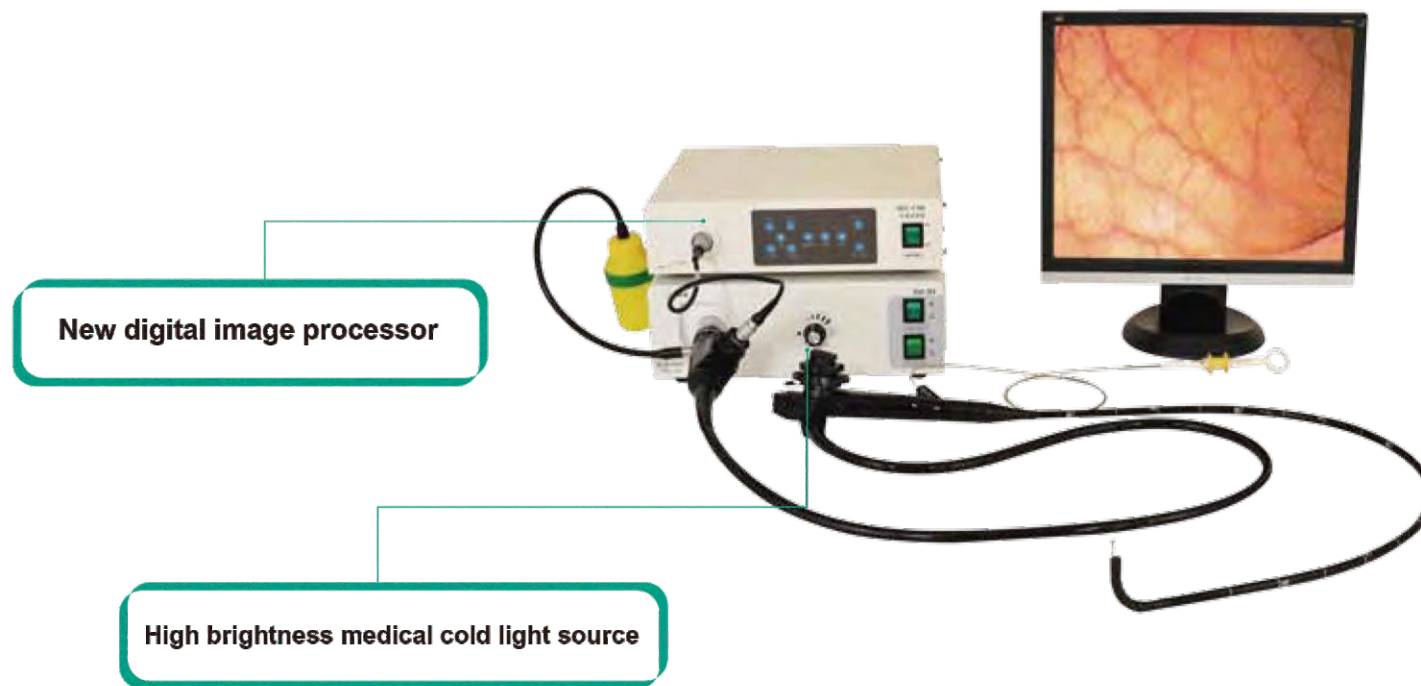


ES-EGS69 / ES-EGS70
Gastrointestinal & Colono VideoScope

 **ESSE3** srl, Via Garibaldi 30
14022 Castelnuovo D.B. (AT)
Tel +39 011 99 27 706
Fax +39 011 99 27 506
e-mail: danielec@esse3-medical.com
web: www.esse3.dreamgest.com



Gastrointestinal & Colono VideoScope



Item/Model	Gastrointestinal videoscope ES-EGS69 / ES-EGS691	Colonovideoscope ES-EG70 / ES-EG701
Field of view	120° Forward viewing	120° Forward viewing
Depth of View Field	5mm~100mm Fixed Focus	5mm~100mm Fixed Focus
Range of Tip Bending	Up 210° , down 100° Left 100° , right 100°	Up 180° , down 150° Left 150° , right 150°
Outer Diameter of Distal Fnc.	ø 9.8mm/ø 9mm	ø 13.2mm/ø 14.3mm
Outer Diameter of Insertion Tube	ø 9.8mm/ø 9mm	ø 12.8mm/ø 13.7mm
Inner Diameter of Instrument Channel	ø 2.8mm/ø 2.2mm	ø 3.8mm/ø 4.2mm
Working Length	1025mm/1025mm	1300mm/1500mm/1680mm
Waterproof	•/•	•/•

Standard Configurations:

- Gastrointestinal and Colono VideoScope main unit*1;
- Leak detection cover*1;
- Plug the mouth cap*5;
- Hand pressure leak detector*1;
- Cleaning brush*1;
- Biopsy forceps*1;
- Water bottle assembly*1;
- Mouth pad*2;
- Technical Instructions*1;
- User Manual*1;
- Carton box*1



*Specification design and accessories are subject to change without any notice on obligation on the part of manufacturer.